

Housing Supply Overview

A RESEARCH TOOL PROVIDED BY SOUTH CAROLINA REALTORS®



March 2026

U.S. pending home sales rose for the first time in three months, climbing 1.8% month-over-month, according to the National Association of REALTORS®. Economists polled by Reuters had forecast a 0.6% decline in contract signings. Pending home sales increased in the South, Midwest, and West but decreased in the Northeast. For the 12-month period spanning April 2025 through March 2026, Pending Sales in the Pee Dee REALTOR® Association region were down 10.3 percent overall. The price range with the largest pending sales gain was the \$750,001 to \$1,000,000 range, where sales were up 20.0 percent.

The overall Median Sales Price increased 4.1 percent to \$231,750. The property type with the largest gain was the Condos segment, where prices improved 12.8 percent to \$163,500. The price range that tended to sell the quickest was the \$750,001 to \$1,000,000 range at 46 days. The price range that tended to sell the slowest was the \$1,000,001 and Above range at 75 days.

Market-wide, inventory levels went up 52.3 percent. The property type with the largest gain was the Single-Family Homes segment, where the number of properties for sale went up 44.3 percent. That amounts to 6.2 months of inventory for Single-Family Homes and 4.8 months of inventory for Condos.

Quick Facts

+ 20.0%

- 9.5%

- 10.6%

Price Range with
Strongest Sales:
\$750,001 to \$1,000,000

Bedroom Count with
Strongest Sales:
3 Bedrooms

Property Type With
Strongest Sales:
Single-Family Homes

Pending Sales	2
Closed Sales	3
Days On Market Until Sale	4
Median Sales Price	5
Percent of List Price Received	6
Inventory of Homes for Sale	7
Months Supply of Inventory	8



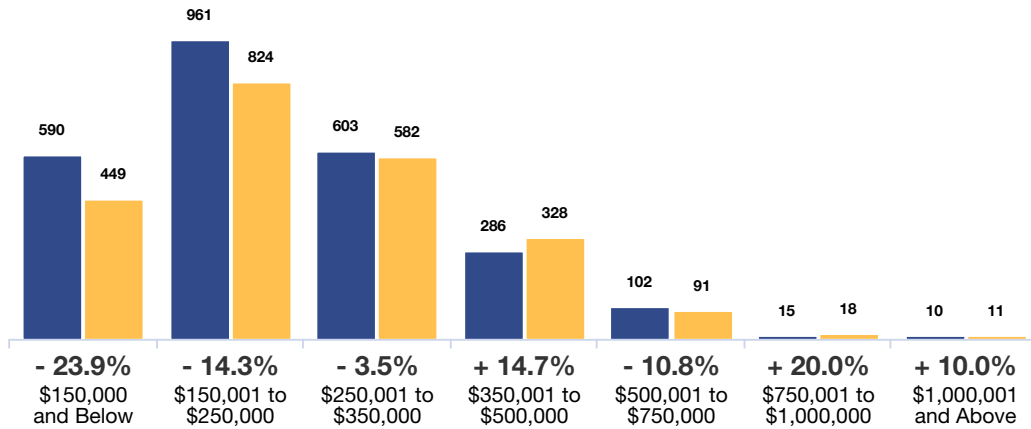
Pending Sales



A count of properties on which offers have been accepted. **Based on a rolling 12-month total.**

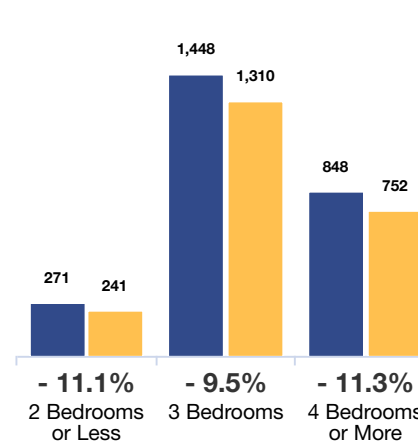
By Price Range

■ 3-2025 ■ 3-2026



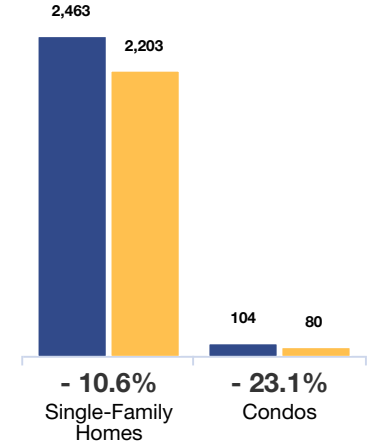
By Bedroom Count

■ 3-2025 ■ 3-2026



By Property Type

■ 3-2025 ■ 3-2026



All Properties

By Price Range	3-2025	3-2026	Change
\$150,000 and Below	590	449	- 23.9%
\$150,001 to \$250,000	961	824	- 14.3%
\$250,001 to \$350,000	603	582	- 3.5%
\$350,001 to \$500,000	286	328	+ 14.7%
\$500,001 to \$750,000	102	91	- 10.8%
\$750,001 to \$1,000,000	15	18	+ 20.0%
\$1,000,001 and Above	10	11	+ 10.0%
All Price Ranges	2,567	2,303	- 10.3%

Single-Family Homes

By Price Range	3-2025	3-2026	Change
\$150,000 and Below	532	417	- 21.6%
\$150,001 to \$250,000	923	774	- 16.1%
\$250,001 to \$350,000	596	568	- 4.7%
\$350,001 to \$500,000	286	324	+ 13.3%
\$500,001 to \$750,000	102	91	- 10.8%
\$750,001 to \$1,000,000	15	18	+ 20.0%
\$1,000,001 and Above	9	11	+ 22.2%
All Price Ranges	2,463	2,203	- 10.6%

Condos

By Bedroom Count	3-2025	3-2026	Change
2 Bedrooms or Less	71	33	- 53.5%
3 Bedrooms	32	44	+ 37.5%
4 Bedrooms or More	1	3	+ 200.0%
All Bedroom Counts	104	80	- 23.1%

By Bedroom Count	3-2025	3-2026	Change
2 Bedrooms or Less	271	241	- 11.1%
3 Bedrooms	1,448	1,310	- 9.5%
4 Bedrooms or More	848	752	- 11.3%
All Bedroom Counts	2,567	2,303	- 10.3%

By Price Range	3-2025	3-2026	Change
\$150,000 and Below	58	29	- 50.0%
\$150,001 to \$250,000	38	47	+ 23.7%
\$250,001 to \$350,000	7	1	- 85.7%
\$350,001 to \$500,000	0	3	—
\$500,001 to \$750,000	0	0	0.0%
\$750,001 to \$1,000,000	0	0	0.0%
\$1,000,001 and Above	1	0	- 100.0%
All Price Ranges	104	80	- 23.1%

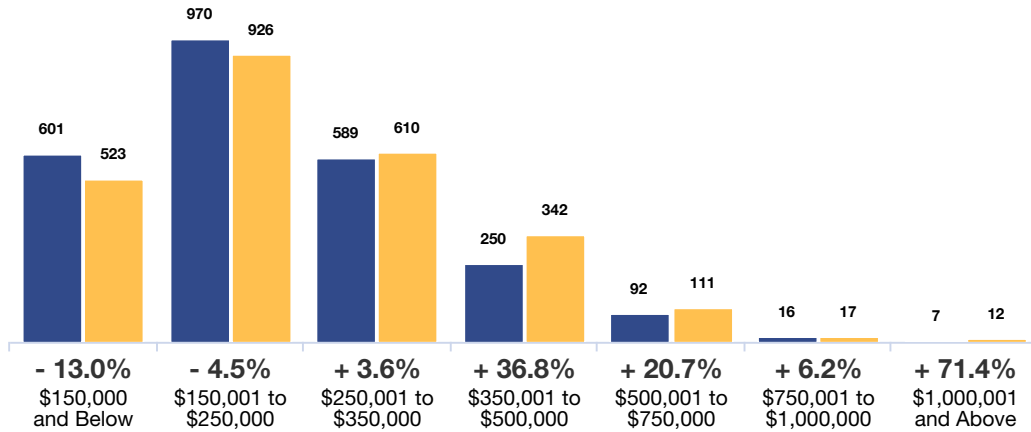
Closed Sales



A count of the actual sales that closed. **Based on a rolling 12-month total.**

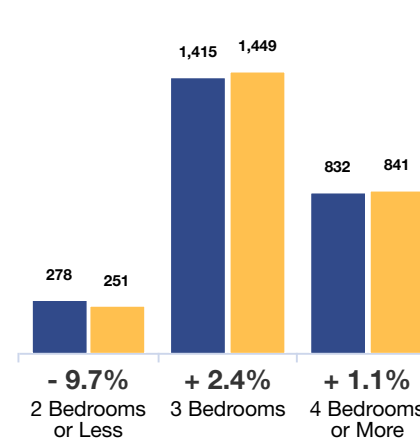
By Price Range

■ 3-2025 ■ 3-2026



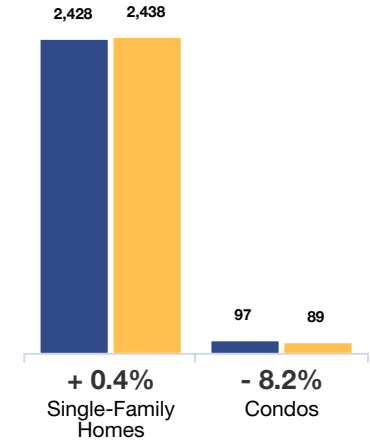
By Bedroom Count

■ 3-2025 ■ 3-2026



By Property Type

■ 3-2025 ■ 3-2026



All Properties

By Price Range	3-2025	3-2026	Change
\$150,000 and Below	601	523	- 13.0%
\$150,001 to \$250,000	970	926	- 4.5%
\$250,001 to \$350,000	589	610	+ 3.6%
\$350,001 to \$500,000	250	342	+ 36.8%
\$500,001 to \$750,000	92	111	+ 20.7%
\$750,001 to \$1,000,000	16	17	+ 6.2%
\$1,000,001 and Above	7	12	+ 71.4%
All Price Ranges	2,525	2,541	+ 0.6%

Single-Family Homes

By Bedroom Count	3-2025	3-2026	Change
2 Bedrooms or Less	278	251	- 9.7%
3 Bedrooms	1,415	1,449	+ 2.4%
4 Bedrooms or More	832	841	+ 1.1%
All Bedroom Counts	2,525	2,541	+ 0.6%

Condos

By Price Range	3-2025	3-2026	Change
\$150,000 and Below	60	33	- 45.0%
\$150,001 to \$250,000	30	51	+ 70.0%
\$250,001 to \$350,000	6	3	- 50.0%
\$350,001 to \$500,000	0	2	—
\$500,001 to \$750,000	0	0	0.0%
\$750,001 to \$1,000,000	0	0	0.0%
\$1,000,001 and Above	1	0	- 100.0%
All Price Ranges	97	89	- 8.2%

By Bedroom Count	3-2025	3-2026	Change
2 Bedrooms or Less	278	251	- 9.7%
3 Bedrooms	1,415	1,449	+ 2.4%
4 Bedrooms or More	832	841	+ 1.1%
All Bedroom Counts	2,525	2,541	+ 0.6%

By Price Range	3-2025	3-2026	Change
\$150,000 and Below	541	487	- 10.0%
\$150,001 to \$250,000	940	874	- 7.0%
\$250,001 to \$350,000	583	597	+ 2.4%
\$350,001 to \$500,000	250	340	+ 36.0%
\$500,001 to \$750,000	92	111	+ 20.7%
\$750,001 to \$1,000,000	16	17	+ 6.2%
\$1,000,001 and Above	6	12	+ 100.0%
All Price Ranges	2,428	2,438	+ 0.4%

By Price Range	3-2025	3-2026	Change
\$150,000 and Below	68	40	- 41.2%
\$150,001 to \$250,000	29	45	+ 55.2%
\$250,001 to \$350,000	6	3	- 50.0%
\$350,001 to \$500,000	0	2	—
\$500,001 to \$750,000	0	0	0.0%
\$750,001 to \$1,000,000	0	0	0.0%
\$1,000,001 and Above	1	0	- 100.0%
All Price Ranges	97	89	- 8.2%

Days On Market Until Sale

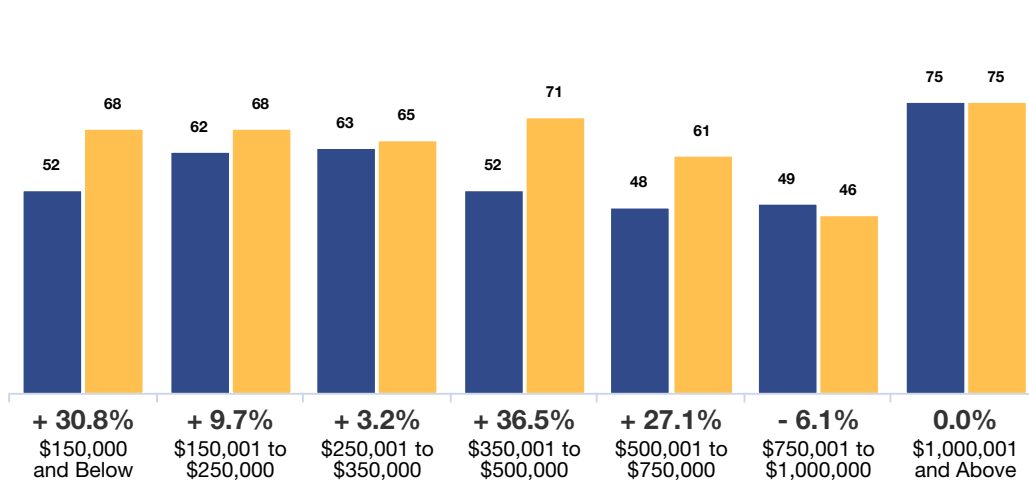


Average number of days between when a property is listed and when an offer is accepted.

Based on a rolling 12-month average.

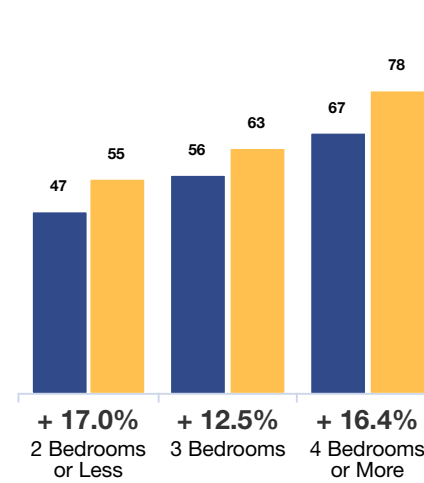
By Price Range

■ 3-2025 ■ 3-2026



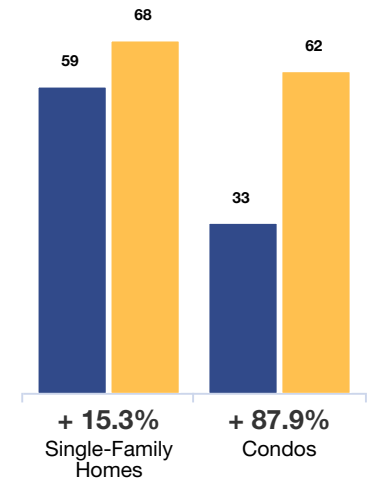
By Bedroom Count

■ 3-2025 ■ 3-2026



By Property Type

■ 3-2025 ■ 3-2026



All Properties

By Price Range	3-2025	3-2026	Change
\$150,000 and Below	52	68	+ 30.8%
\$150,001 to \$250,000	62	68	+ 9.7%
\$250,001 to \$350,000	63	65	+ 3.2%
\$350,001 to \$500,000	52	71	+ 36.5%
\$500,001 to \$750,000	48	61	+ 27.1%
\$750,001 to \$1,000,000	49	46	- 6.1%
\$1,000,001 and Above	75	75	0.0%
All Price Ranges	58	67	+ 15.5%

Single-Family Homes

	3-2025	3-2026	Change
2 Bedrooms or Less	55	70	+ 27.3%
3 Bedrooms	62	68	+ 9.7%
4 Bedrooms or More	63	65	+ 3.2%
Single-Family Homes	52	70	+ 34.6%
Condos	48	61	+ 27.1%
Other	49	46	- 6.1%
Single-Family Homes	87	75	- 13.8%
Condos	59	68	+ 15.3%
Other	33	62	+ 87.9%

Condos

	3-2025	3-2026	Change
2 Bedrooms or Less	28	50	+ 78.6%
3 Bedrooms	46	64	+ 39.1%
4 Bedrooms or More	23	40	+ 73.9%
Single-Family Homes	—	248	—
Condos	—	—	—
Other	—	—	—
Single-Family Homes	1	—	—
Condos	33	62	+ 87.9%

By Bedroom Count

	3-2025	3-2026	Change
2 Bedrooms or Less	47	55	+ 17.0%
3 Bedrooms	56	63	+ 12.5%
4 Bedrooms or More	67	78	+ 16.4%
All Bedroom Counts	58	67	+ 15.5%

	3-2025	3-2026	Change
2 Bedrooms or Less	53	57	+ 7.5%
3 Bedrooms	56	63	+ 12.5%
4 Bedrooms or More	67	78	+ 16.4%
All Bedroom Counts	59	68	+ 15.3%

	3-2025	3-2026	Change
2 Bedrooms or Less	29	49	+ 69.0%
3 Bedrooms	43	76	+ 76.7%
4 Bedrooms or More	—	31	—
All Bedroom Counts	33	62	+ 87.9%

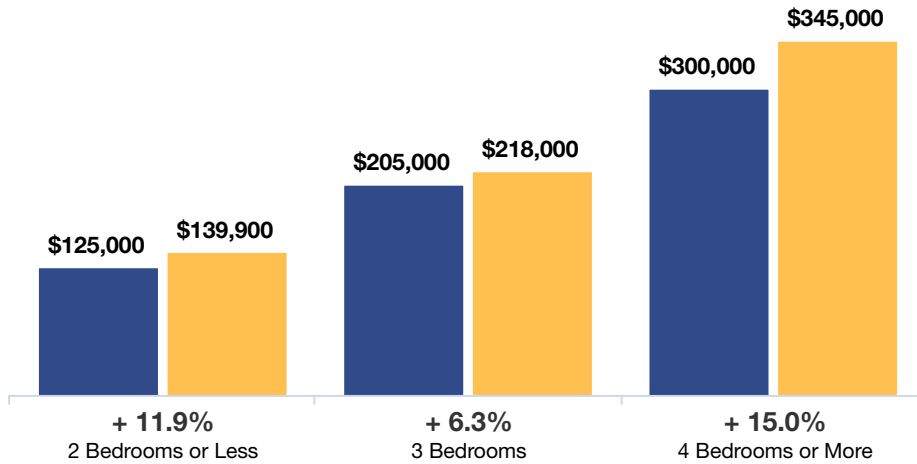
Median Sales Price



Median price point for all closed sales, not accounting for seller concessions. **Based on a rolling 12-month median.**

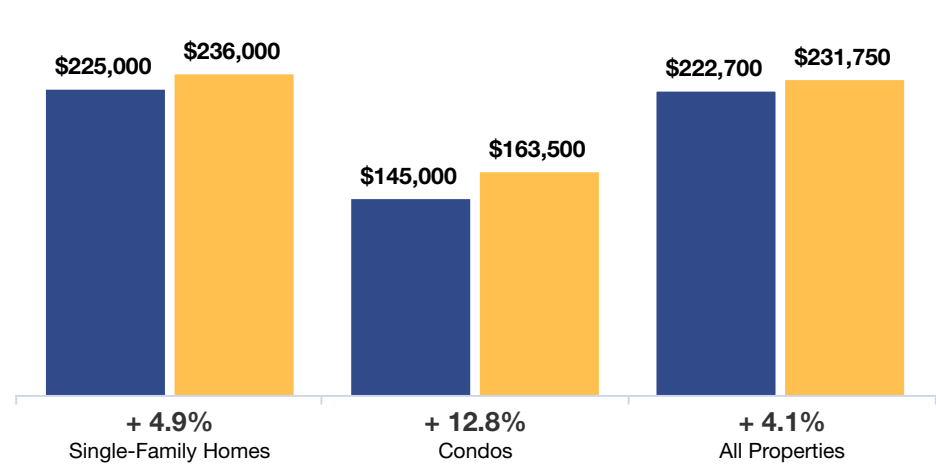
By Bedroom Count

■ 3-2025 ■ 3-2026



By Property Type

■ 3-2025 ■ 3-2026



All Properties

By Bedroom Count

	3-2025	3-2026	Change
2 Bedrooms or Less	\$125,000	\$139,900	+ 11.9%
3 Bedrooms	\$205,000	\$218,000	+ 6.3%
4 Bedrooms or More	\$300,000	\$345,000	+ 15.0%
All Bedroom Counts	\$222,700	\$231,750	+ 4.1%

Single-Family Homes

	3-2025	3-2026	Change
Single-Family Homes	\$119,900	\$125,250	+ 4.5%
Single-Family Homes	\$206,800	\$219,950	+ 6.4%
Single-Family Homes	\$300,000	\$345,000	+ 15.0%
All Single-Family Homes	\$225,000	\$236,000	+ 4.9%

Condos

	3-2025	3-2026	Change
Condos	\$139,000	\$142,500	+ 2.5%
Condos	\$178,500	\$195,000	+ 9.2%
Condos	—	\$230,700	—
All Condos	\$145,000	\$163,500	+ 12.8%

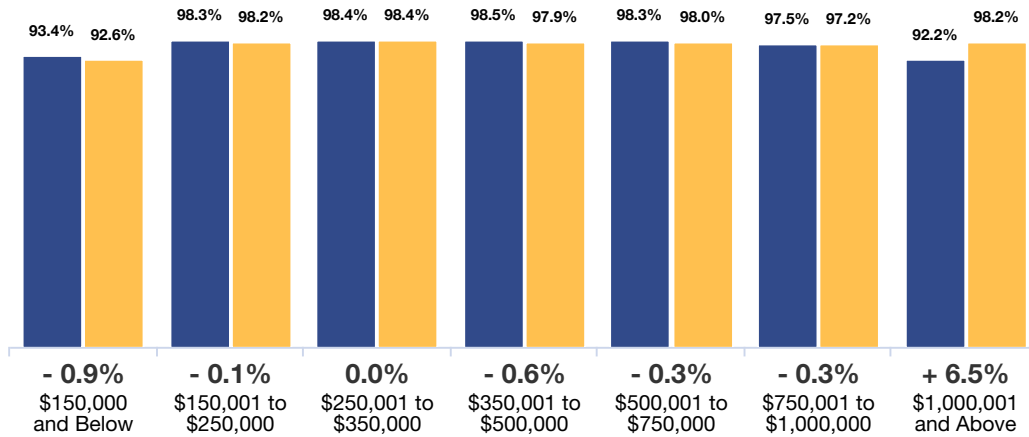
Percent of List Price Received



Percentage found when dividing a property's sales price by its last list price, then taking the average for all properties sold, not accounting for seller concessions. **Based on a rolling 12-month average.**

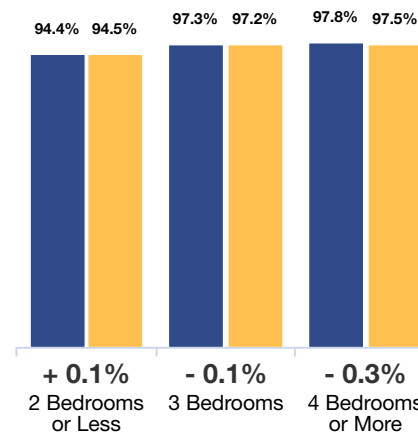
By Price Range

■ 3-2025 ■ 3-2026



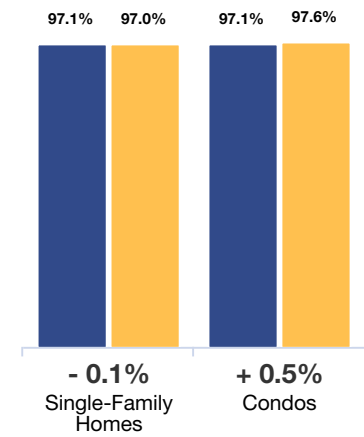
By Bedroom Count

■ 3-2025 ■ 3-2026



By Property Type

■ 3-2025 ■ 3-2026



All Properties

By Price Range	3-2025	3-2026	Change
\$150,000 and Below	93.4%	92.6%	- 0.9%
\$150,001 to \$250,000	98.3%	98.2%	- 0.1%
\$250,001 to \$350,000	98.4%	98.4%	0.0%
\$350,001 to \$500,000	98.5%	97.9%	- 0.6%
\$500,001 to \$750,000	98.3%	98.0%	- 0.3%
\$750,001 to \$1,000,000	97.5%	97.2%	- 0.3%
\$1,000,001 and Above	92.2%	98.2%	+ 6.5%
All Price Ranges	97.1%	97.0%	- 0.1%

Single-Family Homes

By Price Range	3-2025	3-2026	Change
\$150,000 and Below	93.1%	92.3%	- 0.9%
\$150,001 to \$250,000	98.2%	98.2%	0.0%
\$250,001 to \$350,000	98.4%	98.4%	0.0%
\$350,001 to \$500,000	98.5%	97.9%	- 0.6%
\$500,001 to \$750,000	98.3%	98.0%	- 0.3%
\$750,001 to \$1,000,000	97.5%	97.2%	- 0.3%
\$1,000,001 and Above	91.2%	98.2%	+ 7.7%
All Price Ranges	97.1%	97.0%	- 0.1%

Condos

By Price Range	3-2025	3-2026	Change
\$150,000 and Below	96.1%	96.5%	+ 0.4%
\$150,001 to \$250,000	99.2%	98.5%	- 0.7%
\$250,001 to \$350,000	96.4%	96.1%	- 0.3%
\$350,001 to \$500,000	—	96.4%	—
\$500,001 to \$750,000	—	—	—
\$750,001 to \$1,000,000	—	—	—
\$1,000,001 and Above	98.3%	—	—
All Price Ranges	97.1%	97.6%	+ 0.5%

By Bedroom Count

By Bedroom Count	3-2025	3-2026	Change
2 Bedrooms or Less	94.4%	94.5%	+ 0.1%
3 Bedrooms	97.3%	97.2%	- 0.1%
4 Bedrooms or More	97.8%	97.5%	- 0.3%
All Bedroom Counts	97.1%	97.0%	- 0.1%

Single-Family Homes

By Bedroom Count	3-2025	3-2026	Change
2 Bedrooms or Less	93.6%	93.6%	0.0%
3 Bedrooms	97.3%	97.2%	- 0.1%
4 Bedrooms or More	97.8%	97.5%	- 0.3%
All Bedroom Counts	97.1%	97.0%	- 0.1%

Condos

By Bedroom Count	3-2025	3-2026	Change
2 Bedrooms or Less	96.8%	97.3%	+ 0.5%
3 Bedrooms	97.8%	98.0%	+ 0.2%
4 Bedrooms or More	—	96.9%	—
All Bedroom Counts	97.1%	97.6%	+ 0.5%

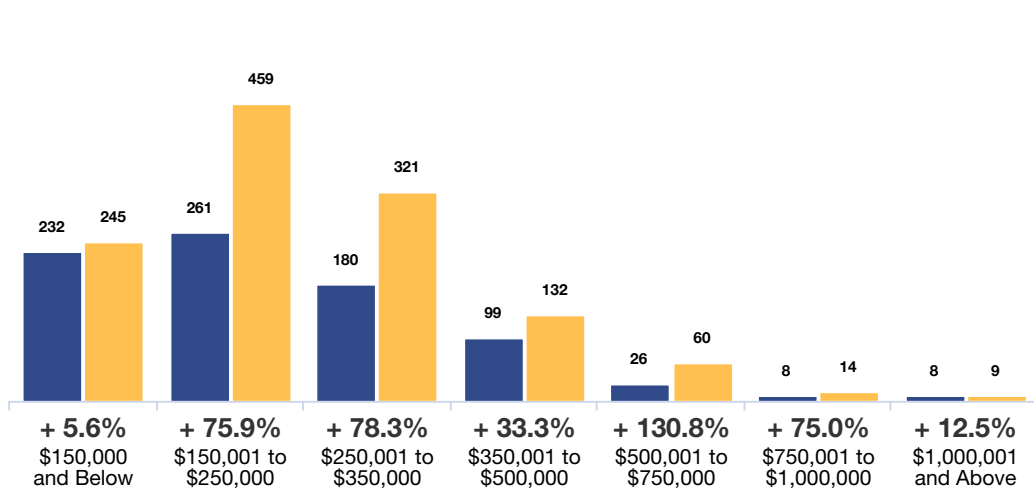
Inventory of Homes for Sale



The number of properties available for sale in active status at the end of the most recent month. **Based on one month of activity.**

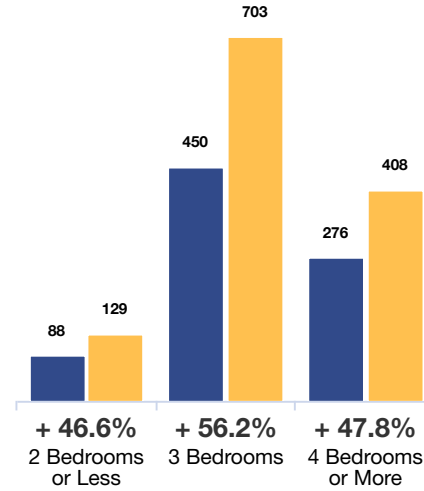
By Price Range

■ 3-2025 ■ 3-2026



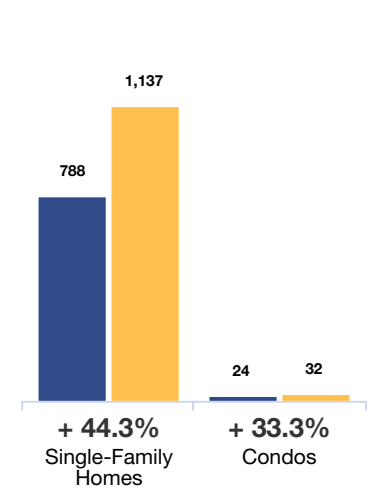
By Bedroom Count

■ 3-2025 ■ 3-2026



By Property Type

■ 3-2025 ■ 3-2026



	All Properties			Single-Family Homes			Condos		
By Price Range	3-2025	3-2026	Change	3-2025	3-2026	Change	3-2025	3-2026	Change
\$150,000 and Below	232	245	+ 5.6%	214	202	- 5.6%	17	16	- 5.9%
\$150,001 to \$250,000	261	459	+ 75.9%	255	415	+ 62.7%	5	13	+ 160.0%
\$250,001 to \$350,000	180	321	+ 78.3%	180	308	+ 71.1%	0	1	—
\$350,001 to \$500,000	99	132	+ 33.3%	97	130	+ 34.0%	2	1	- 50.0%
\$500,001 to \$750,000	26	60	+ 130.8%	26	59	+ 126.9%	0	1	—
\$750,001 to \$1,000,000	8	14	+ 75.0%	8	14	+ 75.0%	0	0	0.0%
\$1,000,001 and Above	8	9	+ 12.5%	8	9	+ 12.5%	0	0	0.0%
All Price Ranges	814	1,240	+ 52.3%	788	1,137	+ 44.3%	24	32	+ 33.3%
By Bedroom Count	3-2025	3-2026	Change	3-2025	3-2026	Change	3-2025	3-2026	Change
2 Bedrooms or Less	88	129	+ 46.6%	72	71	- 1.4%	16	20	+ 25.0%
3 Bedrooms	450	703	+ 56.2%	441	659	+ 49.4%	7	11	+ 57.1%
4 Bedrooms or More	276	408	+ 47.8%	275	407	+ 48.0%	1	1	0.0%
All Bedroom Counts	814	1,240	+ 52.3%	788	1,137	+ 44.3%	24	32	+ 33.3%

Months Supply of Inventory

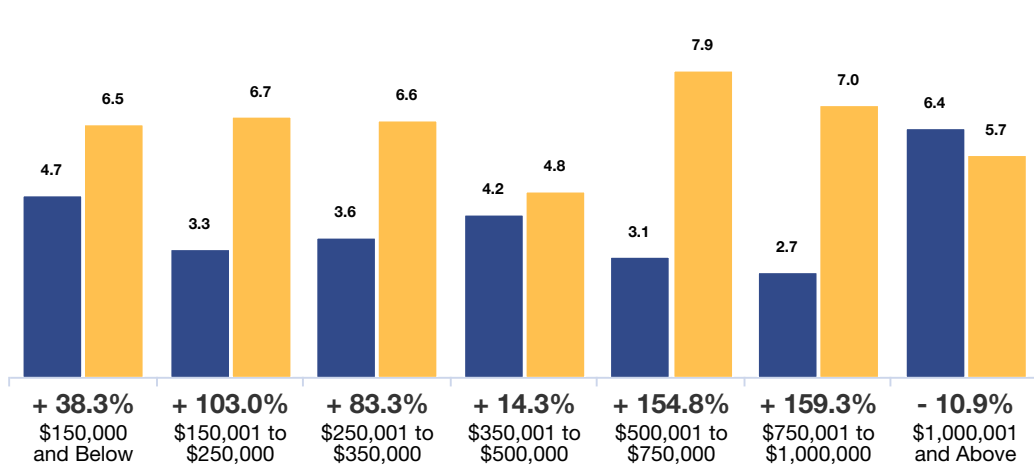


The inventory of homes for sale at the end of the most recent month, divided by the average monthly pending sales from the last 12 months.

Based on one month of activity.

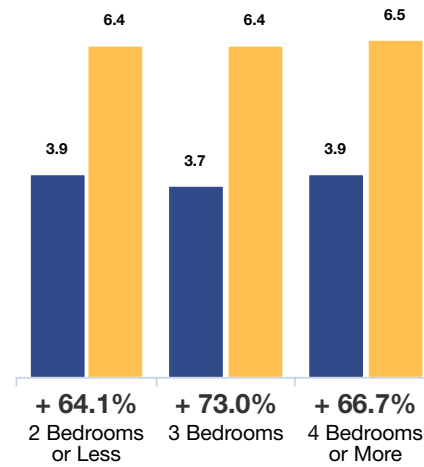
By Price Range

■ 3-2025 ■ 3-2026



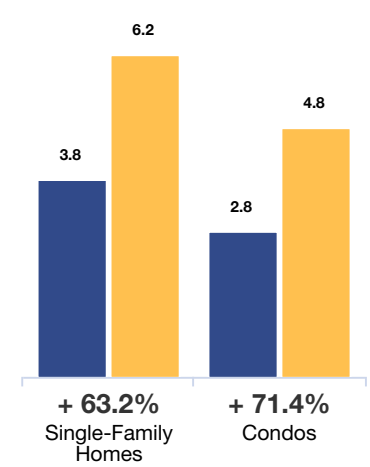
By Bedroom Count

■ 3-2025 ■ 3-2026



By Property Type

■ 3-2025 ■ 3-2026



	All Properties			Single-Family Homes			Condos		
By Price Range	3-2025	3-2026	Change	3-2025	3-2026	Change	3-2025	3-2026	Change
\$150,000 and Below	4.7	6.5	+ 38.3%	4.8	5.8	+ 20.8%	3.5	5.5	+ 57.1%
\$150,001 to \$250,000	3.3	6.7	+ 103.0%	3.3	6.4	+ 93.9%	1.6	3.0	+ 87.5%
\$250,001 to \$350,000	3.6	6.6	+ 83.3%	3.6	6.5	+ 80.6%	—	1.0	—
\$350,001 to \$500,000	4.2	4.8	+ 14.3%	4.1	4.8	+ 17.1%	—	1.0	—
\$500,001 to \$750,000	3.1	7.9	+ 154.8%	3.1	7.8	+ 151.6%	—	—	—
\$750,001 to \$1,000,000	2.7	7.0	+ 159.3%	2.7	7.0	+ 159.3%	—	—	—
\$1,000,001 and Above	6.4	5.7	- 10.9%	7.1	5.7	- 19.7%	—	—	—
All Price Ranges	3.8	6.5	+ 71.1%	3.8	6.2	+ 63.2%	2.8	4.8	+ 71.4%
By Bedroom Count	3-2025	3-2026	Change	3-2025	3-2026	Change	3-2025	3-2026	Change
2 Bedrooms or Less	3.9	6.4	+ 64.1%	4.3	4.5	+ 4.7%	2.7	6.1	+ 125.9%
3 Bedrooms	3.7	6.4	+ 73.0%	3.7	6.3	+ 70.3%	2.6	3.0	+ 15.4%
4 Bedrooms or More	3.9	6.5	+ 66.7%	3.9	6.5	+ 66.7%	1.0	0.7	- 30.0%
All Bedroom Counts	3.8	6.5	+ 71.1%	3.8	6.2	+ 63.2%	2.8	4.8	+ 71.4%